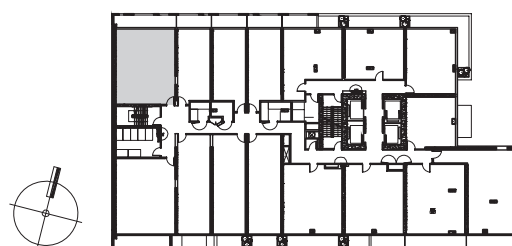
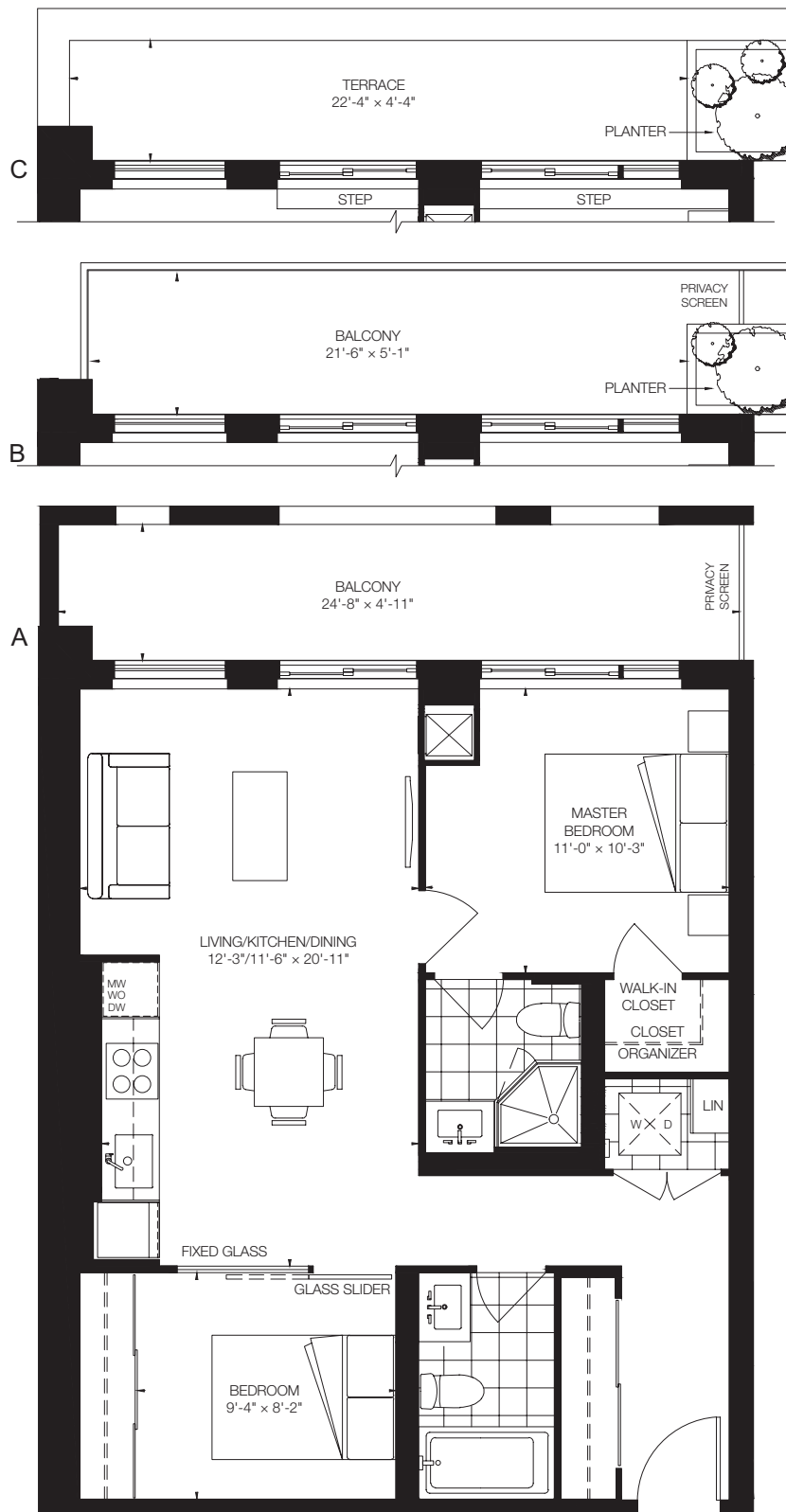


PicassoTM on Richmond

784 sq.ft.
2 Bedroom



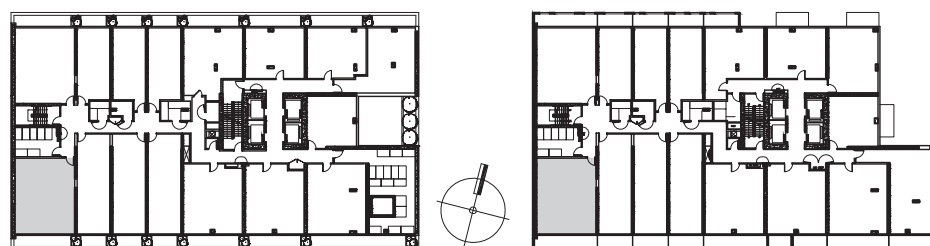
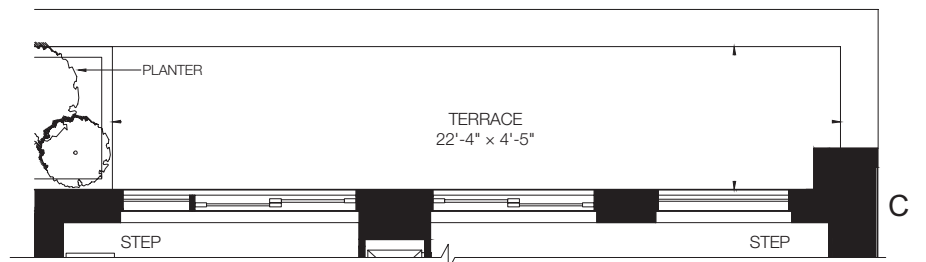
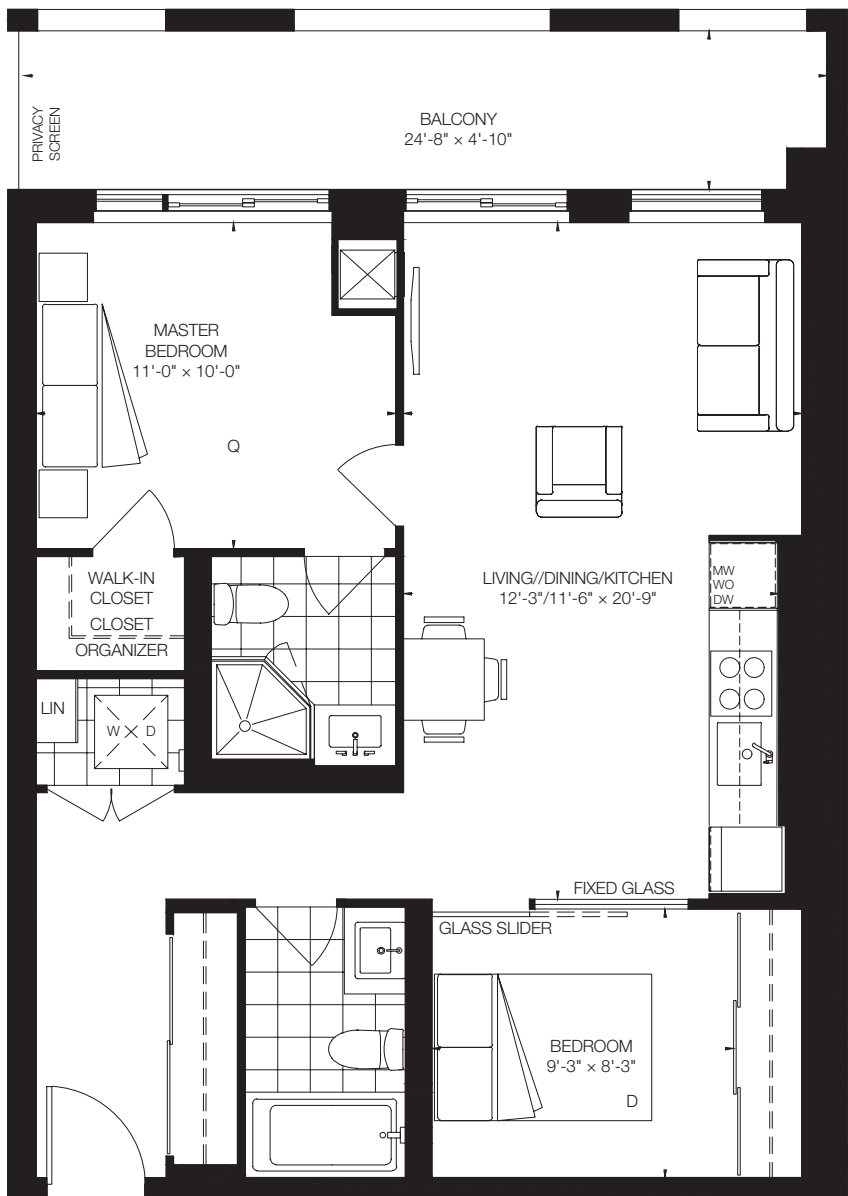
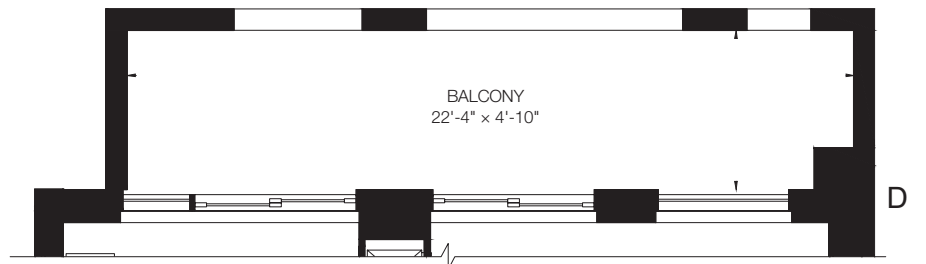
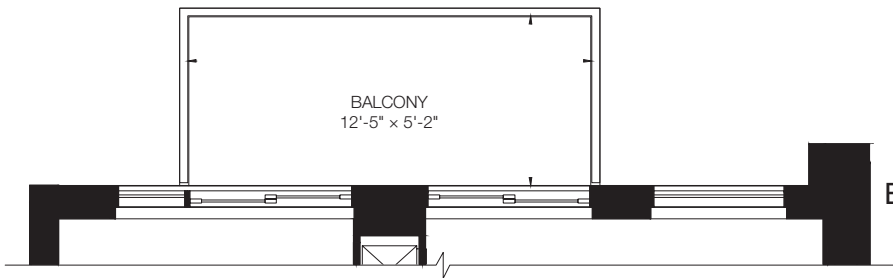
FLOORS 4-9

- A: WINDOW/BALCONY PATTERN ON FLOORS 7, 8, 9
- B: WINDOW/BALCONY PATTERN ON FLOORS 5, 6
- C: WINDOW/BALCONY PATTERN ON FLOOR 4

This plan is not to scale and is subject to architectural review and revision, including without limitation, the Unit being constructed with a layout that is the reverse of that set out above. All materials, specifications, details and dimensions, if any, are approximate and subject to change without notice in order to comply with building site conditions and municipal, structural, Vendor and/or architectural requirements. Actual floor area may vary in accordance with Bulletin 22 published by the Tarion Warranty Corporation. Bulkheads are not shown on this plan and may be located in areas of the Unit as required to provide venting and mechanical systems. Balconies, Terraces and Patios if any are exclusive use common elements, shown for display purposes only and location and size are subject to change without notice. Window location, size and type may vary without notice. E.&O.E.

PicassoTM on Richmond

791 sq.ft.
2 Bedroom



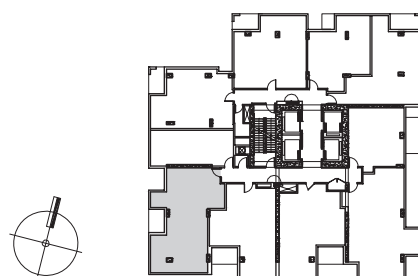
FLOORS 4-9

- A: WINDOW/BALCONY PATTERN ON FLOORS 8, 9
- B: WINDOW/BALCONY PATTERN ON FLOORS 5, 6
- C: WINDOW/BALCONY PATTERN ON FLOOR 4
- D: WINDOW/BALCONY PATTERN ON FLOOR 7

This plan is not to scale and is subject to architectural review and revision, including without limitation, the Unit being constructed with a layout that is the reverse of that set out above. All materials, specifications, details and dimensions, if any, are approximate and subject to change without notice in order to comply with building site conditions and municipal, structural, Vendor and/or architectural requirements. Actual floor area may vary in accordance with Bulletin 22 published by the Tarion Warranty Corporation. Bulkheads are not shown on this plan and may be located in areas of the Unit as required to provide venting and mechanical systems. Balconies, Terraces and Patios if any are exclusive use common elements, shown for display purposes only and location and size are subject to change without notice. Window location, size and type may vary without notice. E.&O.E.

PicassoTM on Richmond

797 sq.ft.
2 Bedroom

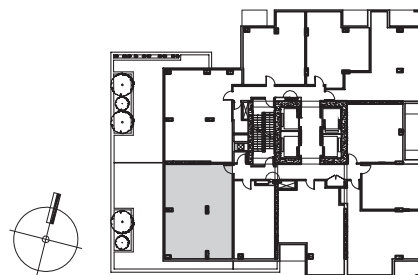
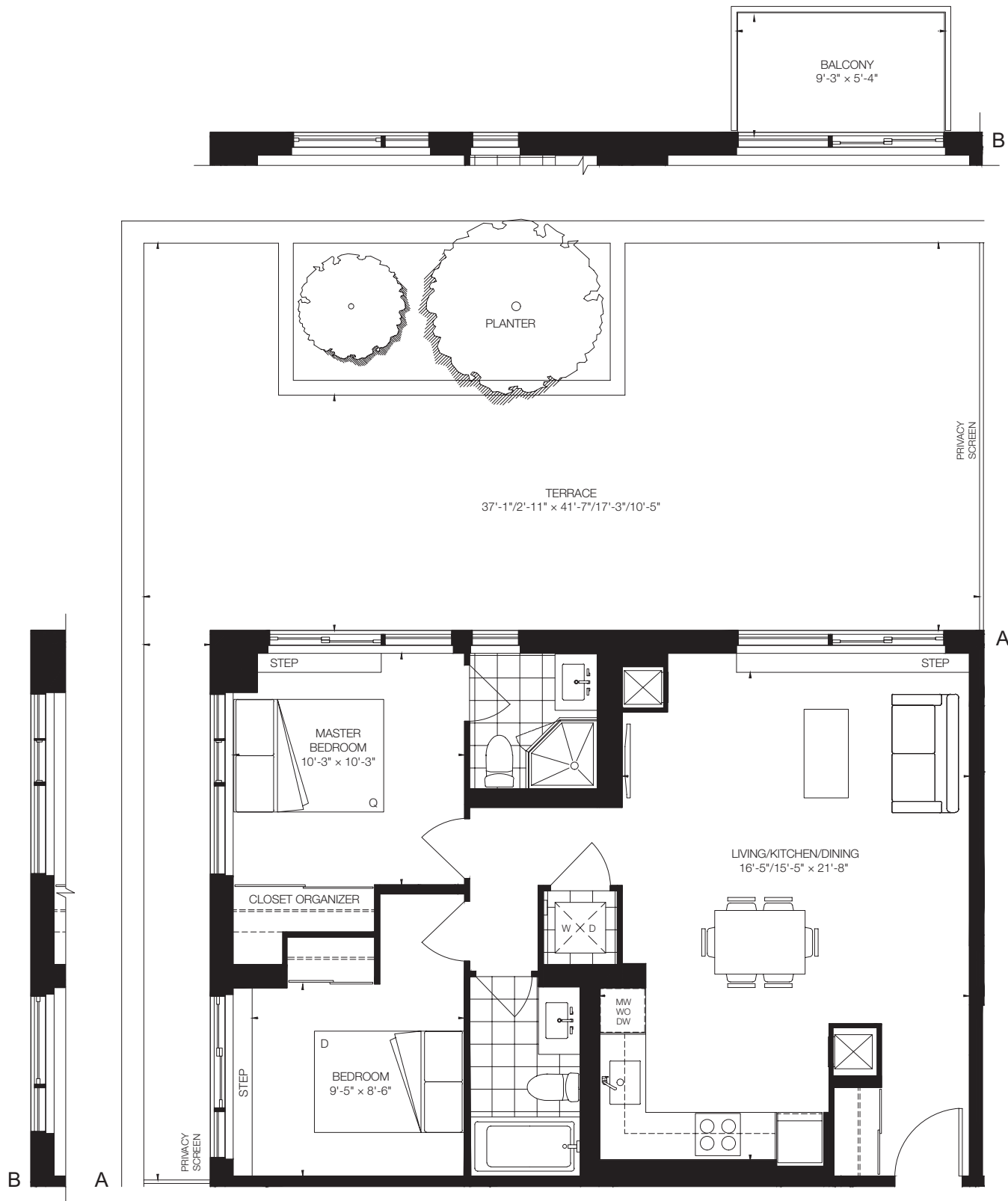


FLOORS 30-35

A: WINDOW/BALCONY PATTERN ON FLOORS 30, 34, 35
B: WINDOW/BALCONY PATTERN ON FLOORS 31, 32, 33

PicassoTM on Richmond

839 sq.ft.
2 Bedroom



FLOORS 19-20

A: WINDOW/BALCONY PATTERN ON FLOOR 19
B: WINDOW/BALCONY PATTERN ON FLOOR 20

This plan is not to scale and is subject to architectural review and revision, including without limitation, the Unit being constructed with a layout that is the reverse of that set out above. All materials, specifications, details and dimensions, if any, are approximate and subject to change without notice in order to comply with building site conditions and municipal, structural, Vendor and/or architectural requirements. Actual floor area may vary in accordance with Bulletin 22 published by the Tarion Warranty Corporation. Bulkheads are not shown on this plan and may be located in areas of the Unit as required to provide venting and mechanical systems. Balconies, Terraces and Patios if any are exclusive use common elements, shown for display purposes only and location and size are subject to change without notice. Window location, size and type may vary without notice. E.&O.E.