

PicassoTM on Richmond

1197 sq.ft.
Paired Units
3 Bedroom



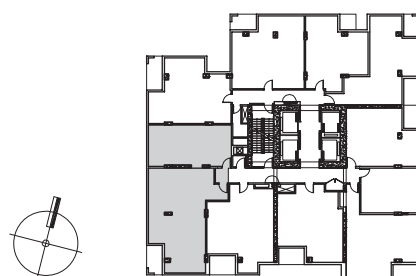
FLOORS 30-35

- A: WINDOW/BALCONY PATTERN ON FLOORS 34, 35
- B: WINDOW/BALCONY PATTERN ON FLOOR 33
- C: WINDOW/BALCONY PATTERN ON FLOORS 31, 32
- D: WINDOW/BALCONY PATTERN ON FLOOR 30

This plan is not to scale and is subject to architectural review and revision, including without limitation, the Unit being constructed with a layout that is the reverse of that set out above. All materials, specifications, details and dimensions, if any, are approximate and subject to change without notice in order to comply with building site conditions and municipal, structural, Vendor and/or architectural requirements. Actual floor area may vary in accordance with Bulletin 22 published by the Tarion Warranty Corporation. Bulkheads are not shown on this plan and may be located in areas of the Unit as required to provide venting and mechanical systems. Balconies, Terraces and Patios if any are exclusive use common elements, shown for display purposes only and location and size are subject to change without notice. Window location, size and type may vary without notice. E.&O.E.

PicassoTM on Richmond

1289 sq.ft.
Paired Units
3 Bedroom



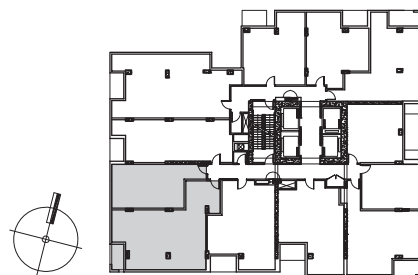
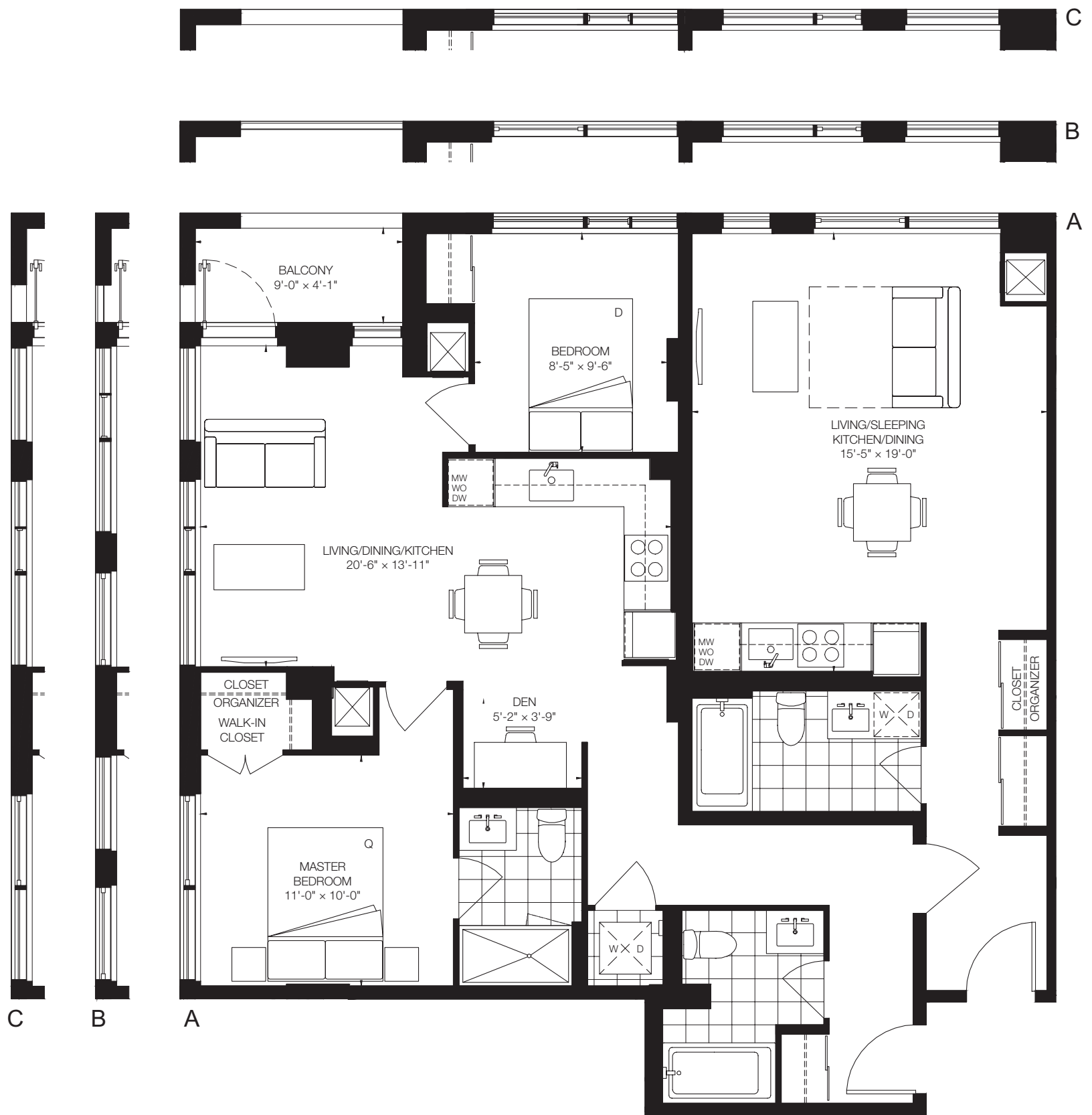
FLOORS 21-27

- A: WINDOW/BALCONY PATTERN ON FLOORS 21, 24, 27
- B: WINDOW/BALCONY PATTERN ON FLOORS 23, 25
- C: WINDOW/BALCONY PATTERN ON FLOOR 22
- D: WINDOW/BALCONY PATTERN ON FLOOR 26

This plan is not to scale and is subject to architectural review and revision, including without limitation, the Unit being constructed with a layout that is the reverse of that set out above. All materials, specifications, details and dimensions, if any, are approximate and subject to change without notice in order to comply with building site conditions and municipal, structural, Vendor and/or architectural requirements. Actual floor area may vary in accordance with Bulletin 22 published by the Tarion Warranty Corporation. Bulkheads are not shown on this plan and may be located in areas of the Unit as required to provide venting and mechanical systems. Balconies, Terraces and Patios if any are exclusive use common elements, shown for display purposes only and location and size are subject to change without notice. Window location, size and type may vary without notice. E.&O.E.

PicassoTM on Richmond

1314 sq.ft.
Paired Units
3 Bedroom



FLOORS 11-18

- A: WINDOW/BALCONY PATTERN ON FLOORS 14, 15, 18
- B: WINDOW/BALCONY PATTERN ON FLOORS 12, 16, 17
- C: WINDOW/BALCONY PATTERN ON FLOOR 11

This plan is not to scale and is subject to architectural review and revision, including without limitation, the Unit being constructed with a layout that is the reverse of that set out above. All materials, specifications, details and dimensions, if any, are approximate and subject to change without notice in order to comply with building site conditions and municipal, structural, Vendor and/or architectural requirements. Actual floor area may vary in accordance with Bulletin 22 published by the Tarion Warranty Corporation. Bulkheads are not shown on this plan and may be located in areas of the Unit as required to provide venting and mechanical systems. Balconies, Terraces and Patios if any are exclusive use common elements, shown for display purposes only and location and size are subject to change without notice. Window location, size and type may vary without notice. E.&O.E.

